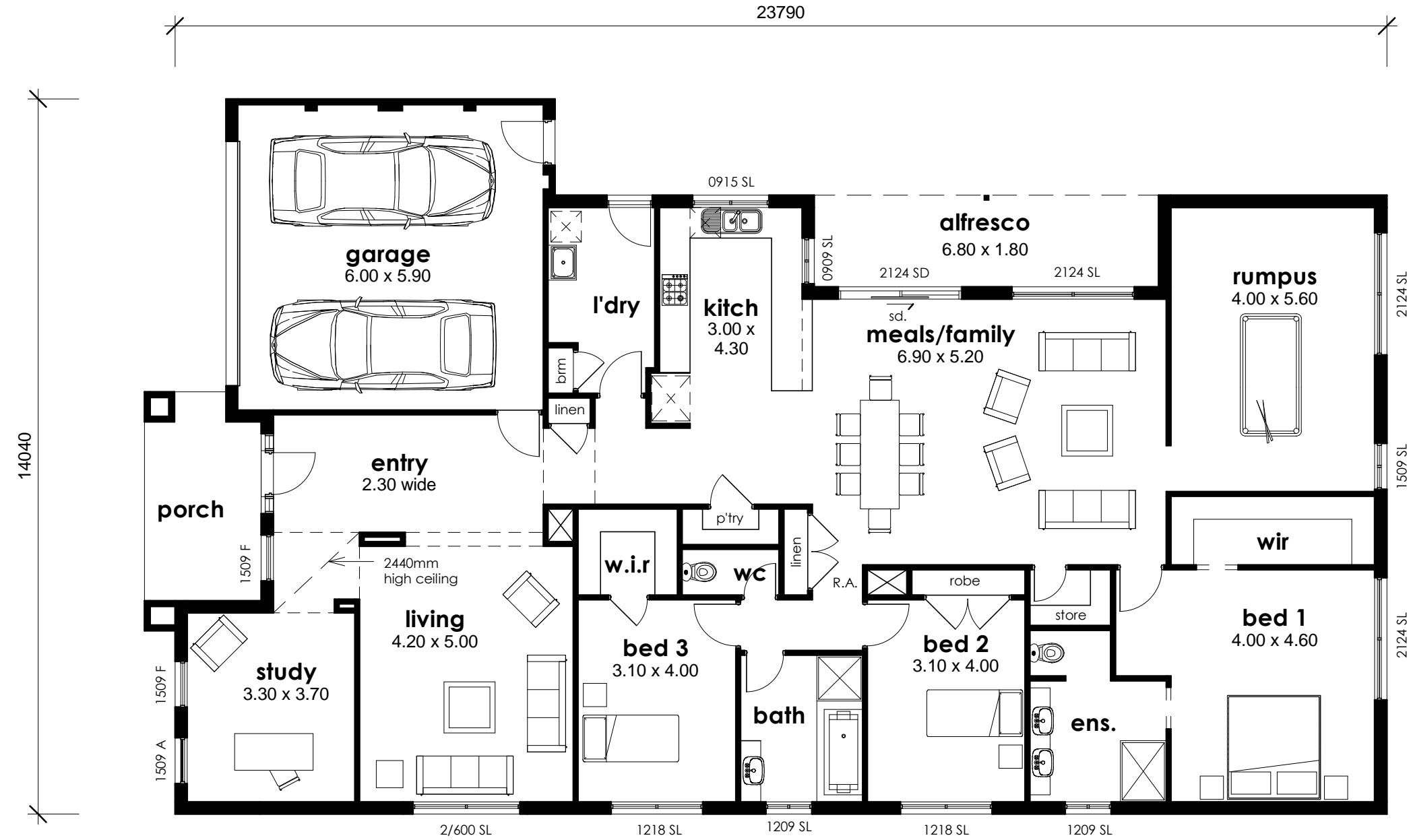


# metropolitan

G-Pac - alternative C



**floor plan**  
1:100

ground floor:	240.05 m <sup>2</sup> / 25.84 sqs
garage:	38.66 m <sup>2</sup> / 4.16 sqs
porch:	9.34 m <sup>2</sup> / 1.01 sqs
alfresco:	12.17 m <sup>2</sup> / 1.31 sqs
<b>total area:</b>	<b>300.22 m<sup>2</sup> / 32.32 sqs</b>